

# GIANT

team **TOBROCO**

Industrielaan 2 5061 KC Oisterwijk

Tel.: +31 (0)13-5211212

Fax: +31 (0)13-5234045

Internet: [www.tobroco.com](http://www.tobroco.com)

E-mail: [info@tobroco.com](mailto:info@tobroco.com)



**V501  
V761T**



## The new **V501 - V761T**

The whole is more than the sum of its parts



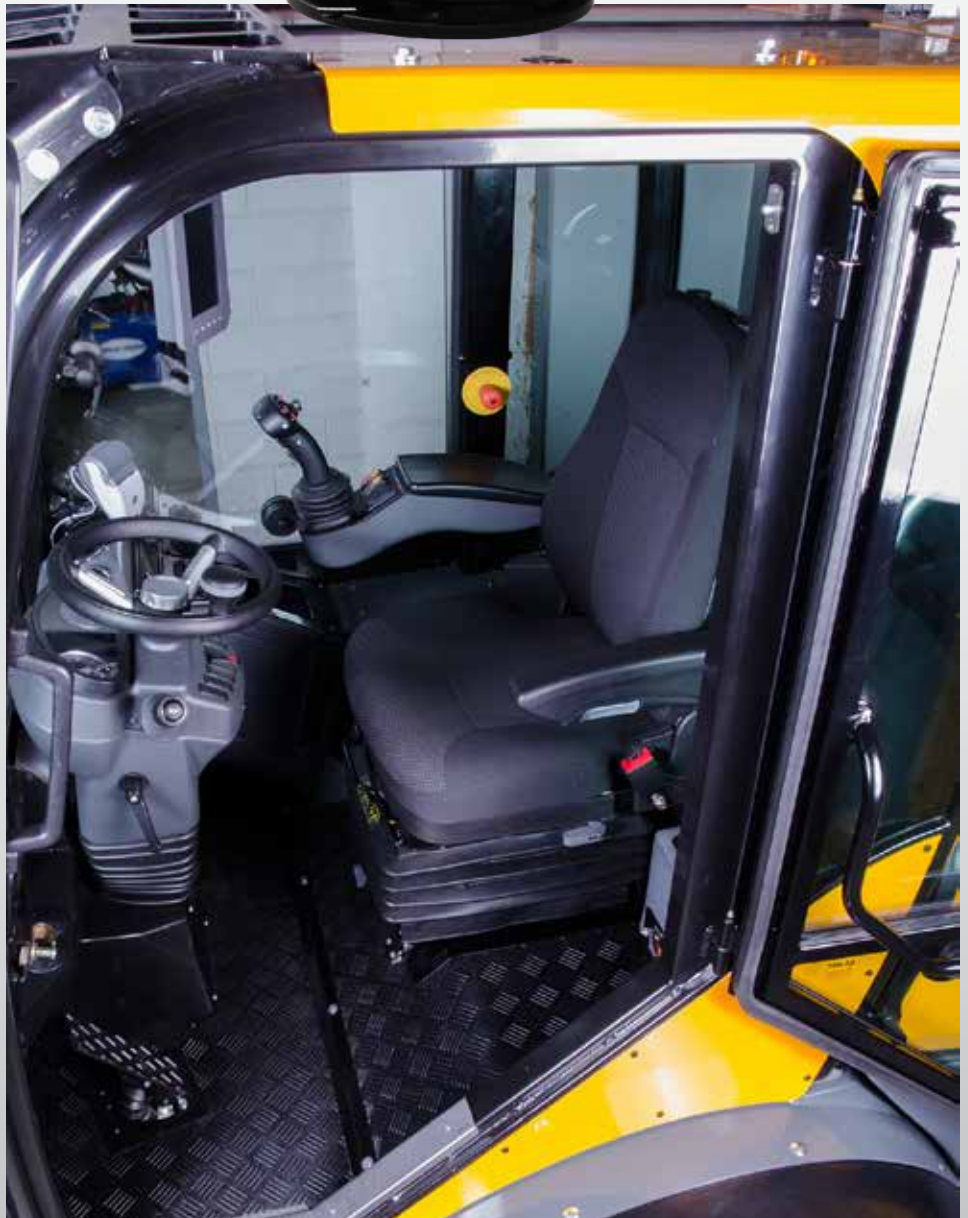
**V501 - V761T**

# COMPLETE

This machine provides a whole new wheel loader experience. It is super strong, ergonomic, efficient, complete, comfortable and a lot more. All these aspects make the V501 and V761T a very multifunctional machine that satisfies all your needs.



The new cabin has various kinds of new exciting features. The most versatile and practical feature is the optional touchpad which provides endless possibilities for your machine. The V501 and V761T are also equipped with a proportional joystick that makes your work way easier. Every touch and movement is extremely precise.







1. Spacious cabin with good visibility



4. ROPS/FOPS cabin



2. Accessible for service and maintenance



5. Integrated armrest



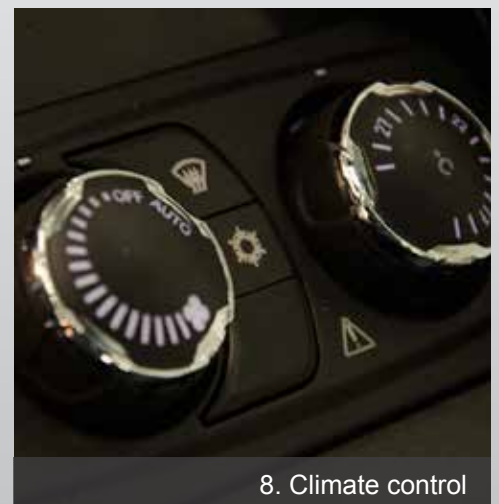
6. Smart lighting



3. Luxury dashboad



7. Integrated counterweight



8. Climate control

1. Large field of view and a comfortable workplace in the spacious cab.
2. Easy assessable engine compartment.
3. Luxury dashboard with speedometer and board computer.
4. "Safety First" in the thoroughly tested and ROPS/FOPS certified cabin.
5. Ergonomic seat with an integrated armrest.
6. Always have your light in the dark nearby.
7. Make the V761T even more multifunctional with the optional hitch.
8. You are in control of the exact temperature in your cabin.



# GIANT









# SUPER CLEAN

Thanks to the smart communication system and the Stage IIIB compliant engine, the V501 and V761T are extremely environmentally friendly.

Scan this code and like us on facebook  
[www.facebook.com/giantwheelloaders](http://www.facebook.com/giantwheelloaders)



## STAGE IIIB



The engine of the V501 and V761T fits the Stage IIIB standard. This means that the engine of the machine is very environmentally friendly.

## PERFORMANCE

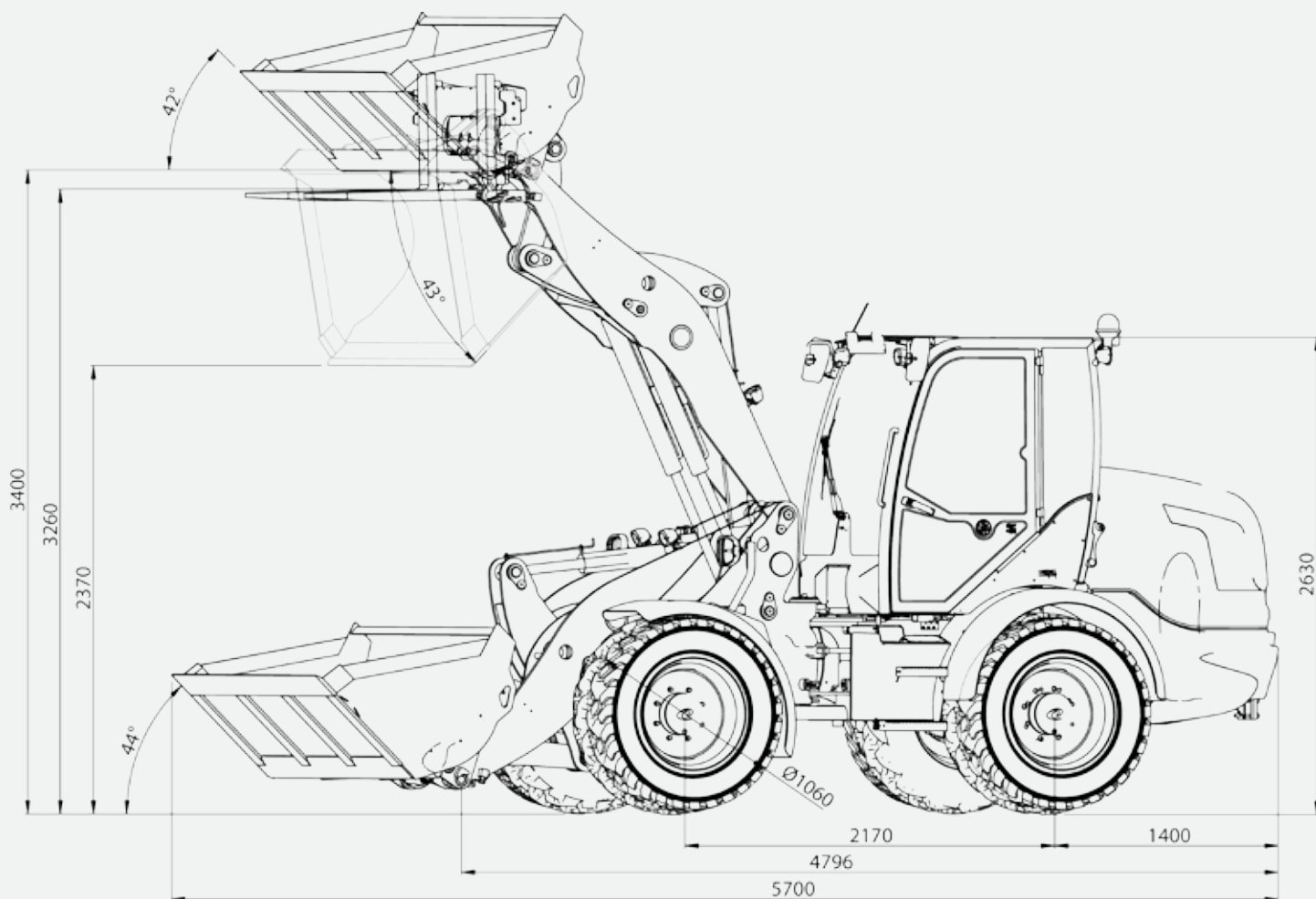
Standard equipped with a hydraulic gear pump with an output of 80 L/min.

**Optional for the V761T**

**A load sensing system up to 150 L/min with 250 bar. In combination with the engine, you will get the absolute optimal performance out of the machine.**



# TECHNICAL SPECIFICATIONS



## V501

Engine	DEUTZ D 2.9 L04 (4 cylinder), 50 pk / 36 kW Stage IIIA
Weight	5600 kg
Tipping load	See tipping load table
Lifting height	3400 mm
Drive hydraulics	Bosch Rexroth 150 L/min (480 bar)
Working hydraulics	80 L/min (250 bar)
Tyres	405/70-20 16PR MPT-01 AS
Driving speed	25 km/h
Service brake	Hydraulic / wet disk
Parking brake	Wet disk SAHR
Attachment bracket	GIANT LARGE hydraulic (800 mm)

## V761T

Engine	DEUTZ TD 2.9 L04 (4 cylinder), 76 pk / 55,6 kW Stage IIIB / Tier 4 Final
Weight	5600 kg
Tipping load	See tipping load table
Lifting height	3400 mm
Drive hydraulics	Bosch Rexroth 150 L/min (480 bar)
Working hydraulics	80 L/min (250 bar) (Optie LS 150 L/Min)
Tyres	405/70-20 16PR MPT-01 AS
Driving speed	25 km/h (Optie 35 km/h)
Service brake	Hydraulic / wet disk
Parking brake	Wet disk SAHR
Attachment bracket	GIANT LARGE hydraulic (800 mm)



Tipping load	
S	4350 kg
T	3900 kg
U	3250 kg
V	2400 kg
W	4600 kg
X	3600 kg
Y	2700 kg



**WWW.GIANT-ATTACHMENTS.COM**



**WWW.TOBROCO.COM**



**TOBROCO**

Industrielaan 2  
5061 KC Oisterwijk (NL)  
Tel.: +31 (0)13-5211212  
Fax: +31 (0)13-5234045  
Internet: [www.tobroco.com](http://www.tobroco.com)  
E-mail: [info@tobroco.com](mailto:info@tobroco.com)

All technical data in this brochure refer to series models that have been tested under operating conditions typical of Central Europe and describe their standard functions. Specifications and their modes of functionality as well as accessories listed in this brochure depend on the individual model and on the options available with a particular product as well as the statutory requirements of the country of sale. Illustrations used in this brochure may show products that have not been mentioned or that are not available as series production machines. The descriptions, illustrations, weights and technical data published herein are non-binding in nature and represent the technical status at the time the document went to press. Because of ongoing development, we reserve the right to make changes, without prior notice, to the design, specification, visual appearance and technology of our products. Should you require special functions that would be available only by using additional components and/or under special circumstances, please feel free to contact us. We will be happy to answer any questions you may have and to provide further information regarding whether and under what conditions applying to the product and the target environment such special functions might be feasible. If you have any concerns about the load capacity or operation of our products in certain working conditions or environments, we recommend that you perform a test run under controlled conditions. Despite meticulous attention to detail, we cannot exclude the possibility that our products may not conform to illustrations or stated dimensions, or that errors may have occurred in calculation or during printing, or that the information given here may be incomplete. Consequently, we do not accept liability for the accuracy or completeness of the information supplied in this brochure. All matters relating to our product warranty are contained within our General Terms and Conditions. We expressly decline to provide additional guarantees. Any liability over and above that contained within our General Terms and Conditions is excluded.